

# BRISTOL

Elevation A 1,484 sq. ft.  
2,102 sq. ft. with Optional  
Loft Plan

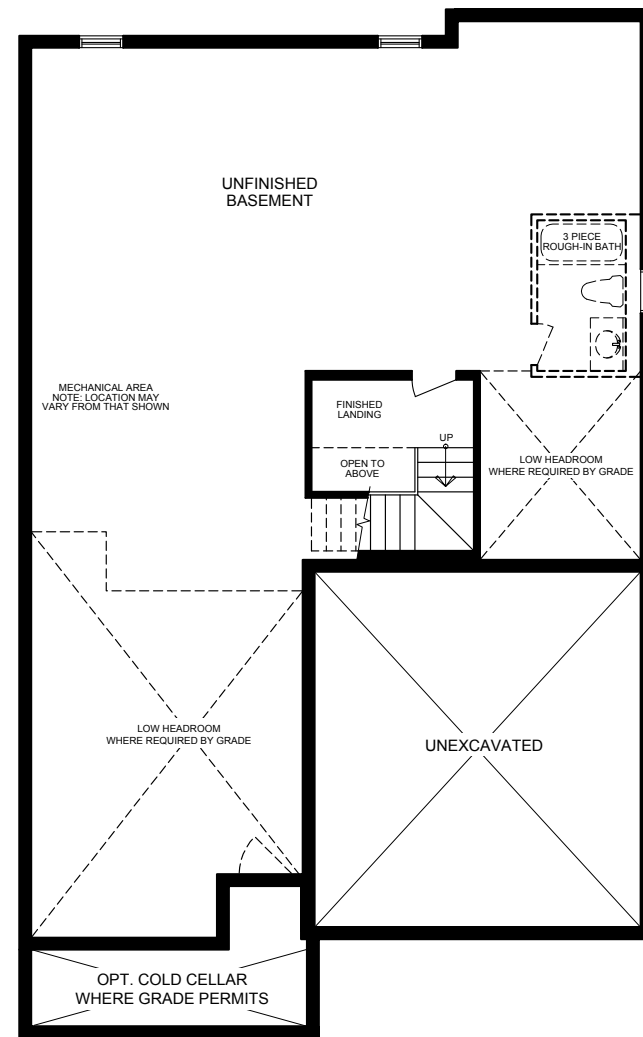
Includes 50 sq. ft.  
Finished Basement Landing



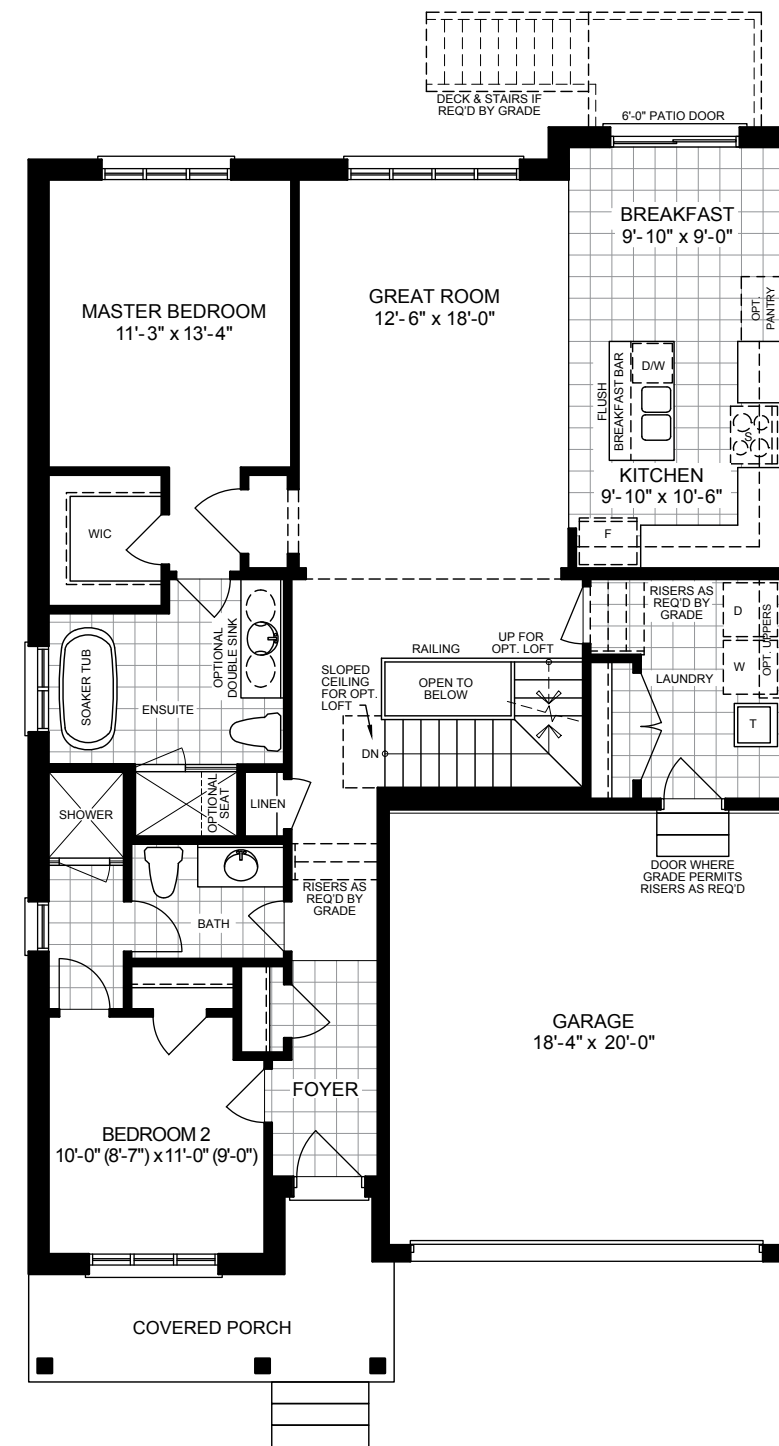
Elevation A



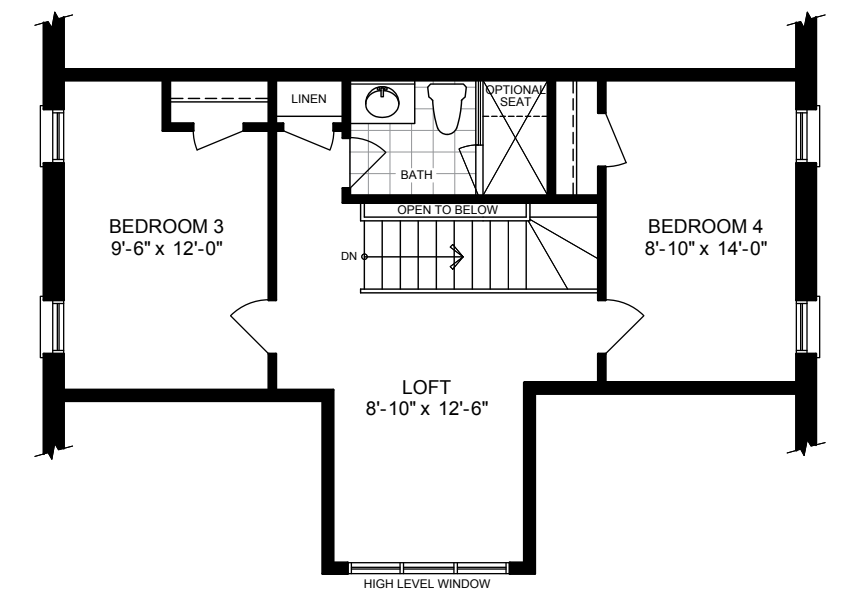
Elevation B



Basement Plan  
Elevation A



Ground Floor Plan  
Elevation A



Optional Loft Floor Plan  
Elevation A